

APPENDIX I
SOCIOECONOMIC REVIEW
BY ADD

US 31W/KY446 Planning Study

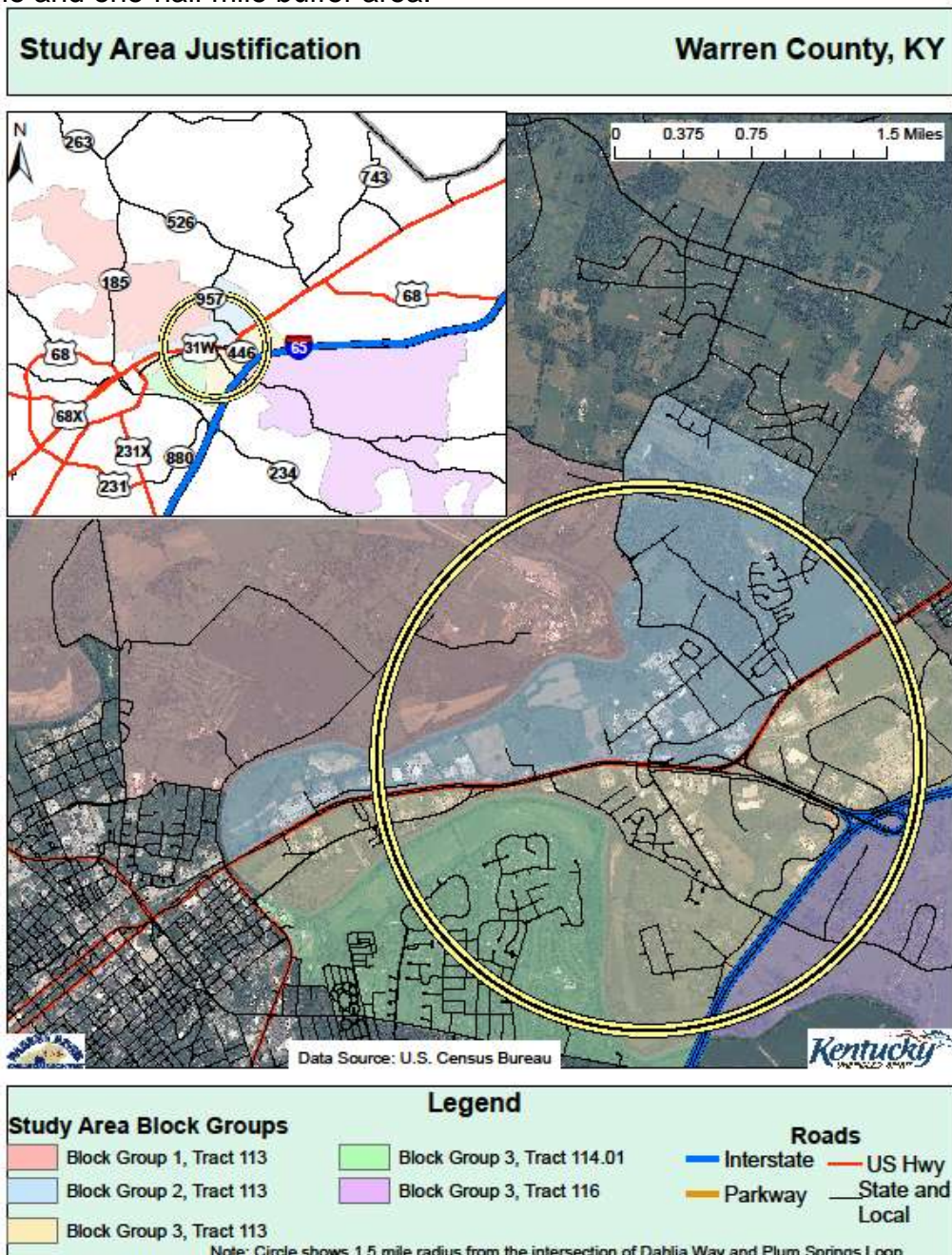
Socioeconomic Study

Brittany L. Fisher, AICP

3/23/2015

Methodology

The US 31W/KY 446 Planning Study area is somewhat lineal and does not conform fully to specific Census Block Groups. A one and one-half mile radius from the intersection of Dahlia Way and Plum Springs Loop was used to ensure the study area and affected population centers were included in the socioeconomic study. The buffered area includes Block Groups 1, 2 and 3 of Census Tract 113; Block Group 3, Census Tract 114.01; and Block Group 3, Census Tract 116 all within Warren County. Block Group 1, Census Tract 113 and Block Group 3, Census Tract 116 were removed from analysis because the majority of the residences in the block group lie outside of the one and one-half mile buffer area.



Map 1: All Block Groups that fell within 1.5 mile radius

Additionally, Block Group 3, Census Tract 114.01 was removed because the area has no direct access to the study area. Barren River separates this Block Group from the study area and there are no river crossings within the area.

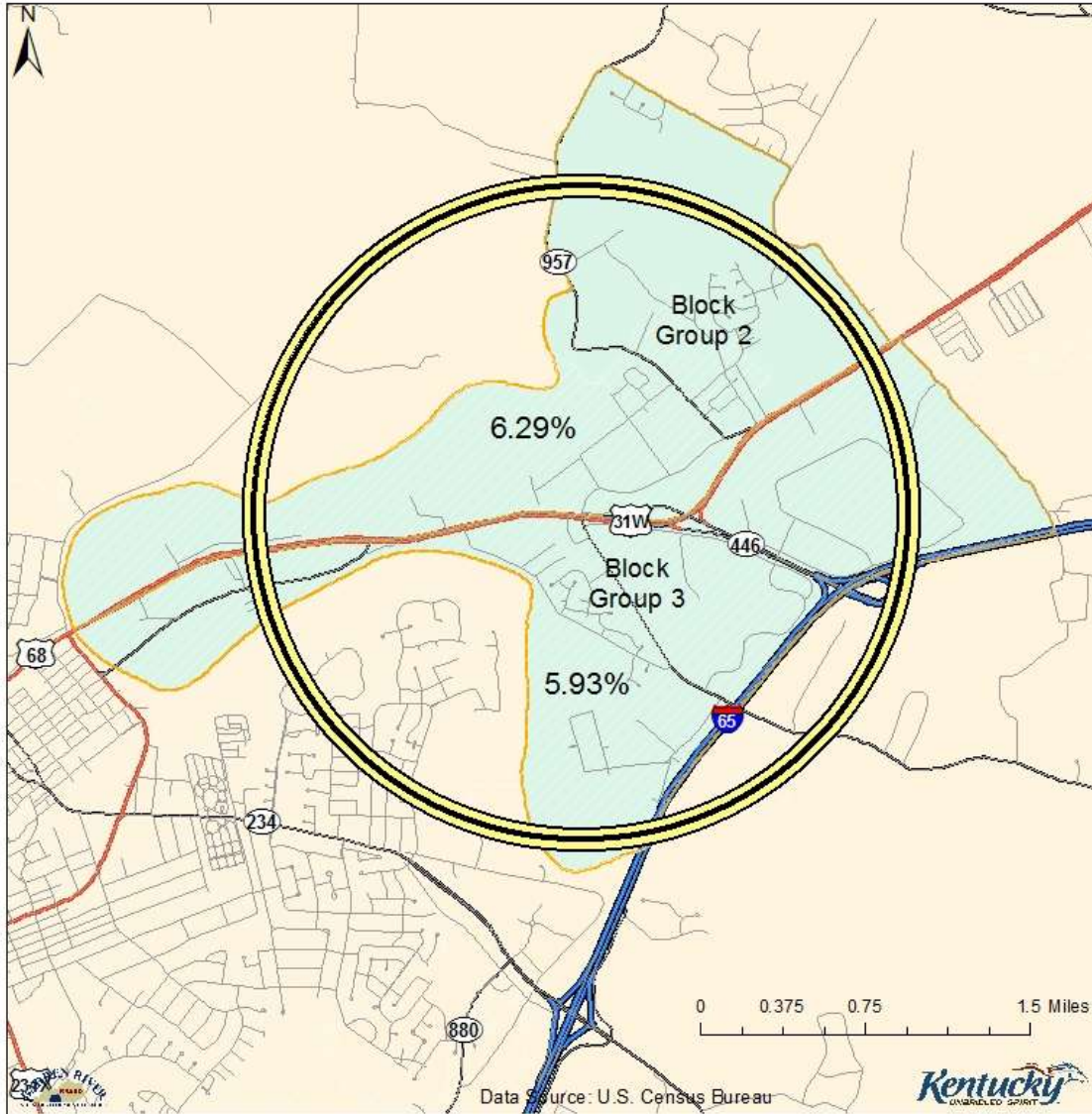
The American Community Survey 2013 was used to calculate block group level population percentage age 65 and older; minority population percentage; percentage of limited English proficiency (using speaks English Very Well as the threshold for proficiency); percentage below the poverty line; and median income. The Kentucky and Warren County block group averages were then determined for each socioeconomic factor. The following analysis compares the state and county averages for each socioeconomic factor with the study area block groups.

The methodologies used in this planning document are appropriate for identifying possible areas of concern in small urban areas and potential project corridors. However, during future phases of project development a more detailed and robust analysis would be required for the NEPA documentation when assessing the potential for adverse and disproportionate impacts to low-income and minority populations.

Analysis

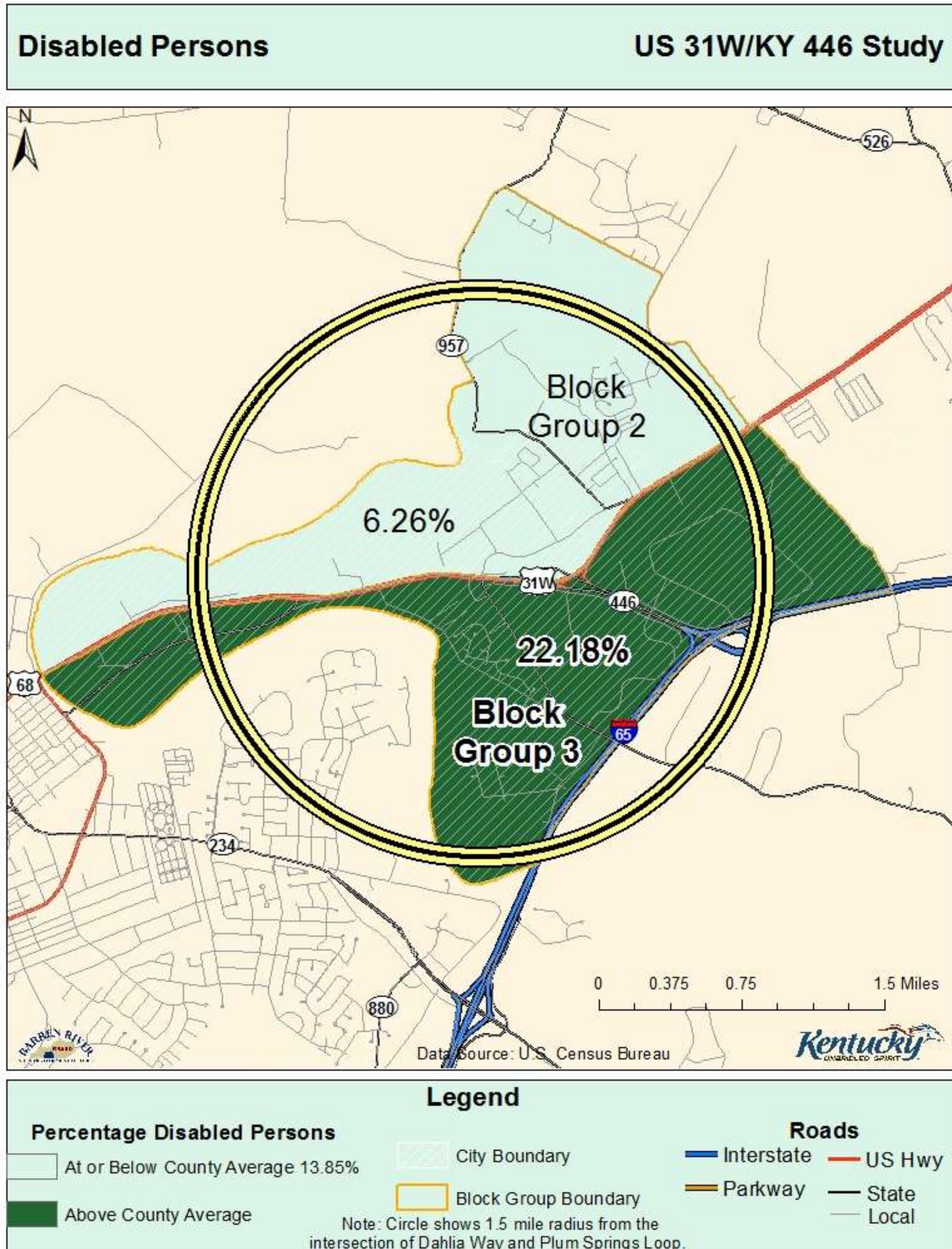
The State average population over age 65 is 14.57%. The Warren Co. population over age 65 is 12.03%. Block Group 2, Tract 113 (6.29%) and Block Group 3, Tract 113 (5.93%) have populations below the state and county averages of percentage population age 65 and older.

Persons Age 65 and Over US 31W/KY 446 Study



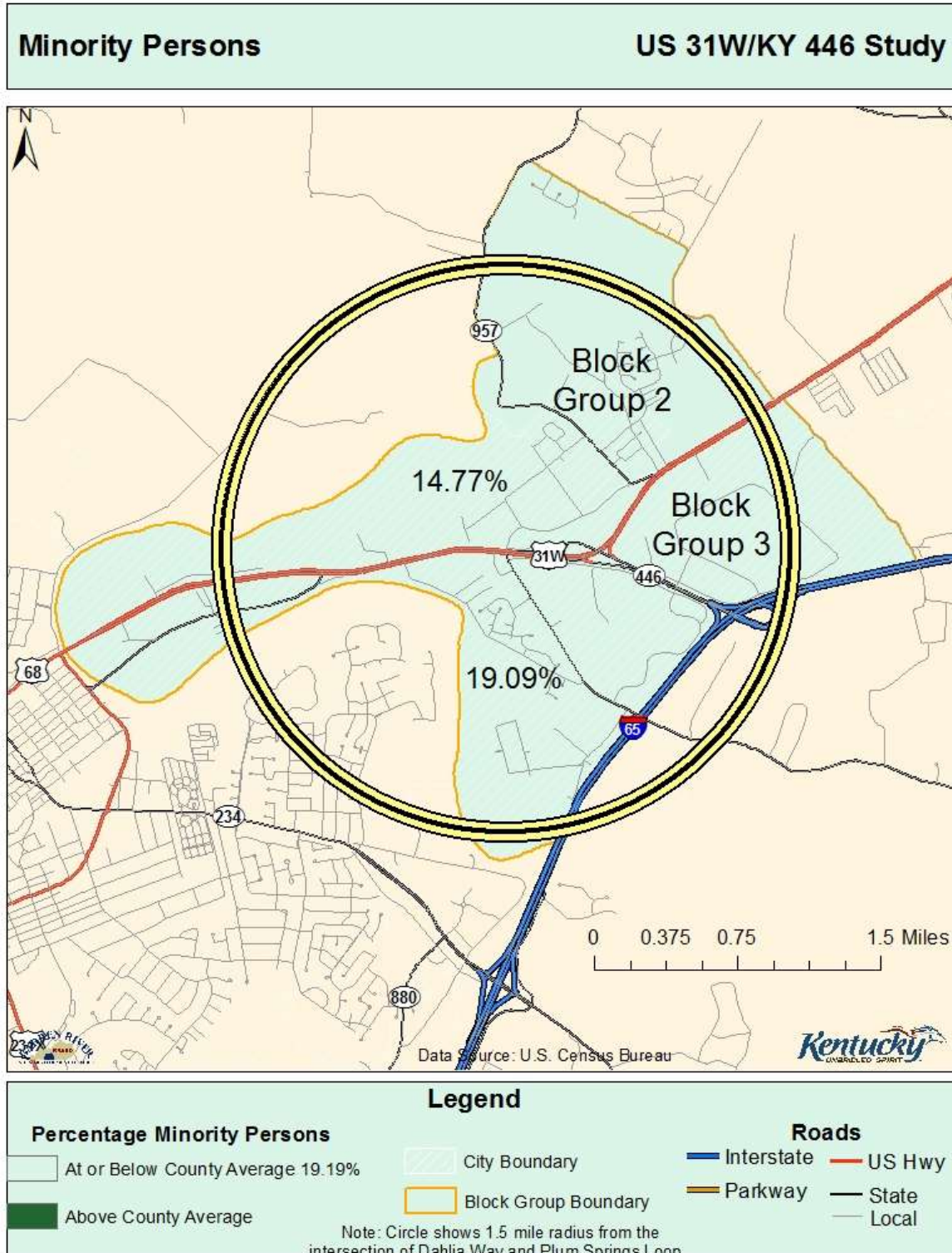
Map 2: Percentage persons age 65 and over

The Kentucky average percentage of disabled persons is 16.45%. Warren County has a lower percentage of disabled persons with an average of 13.85%. Block Group 2 has fewer disabled persons than the state and county with an average of 6.26%. Block Group 3 has a higher percentage of disabled persons than Kentucky and Warren County with 22.18%.



Map 3: Percentage of disabled persons

Block Groups 2 and 3 of Tract 113 fall between the Kentucky and Warren County averages for minority population percentage. Block Group 2 has a minority percentage of 14.77% and Block Group 3 has a percentage of 19.09%. The Kentucky average is 13.98%, whereas Warren County has a higher average with 19.19% minority persons.

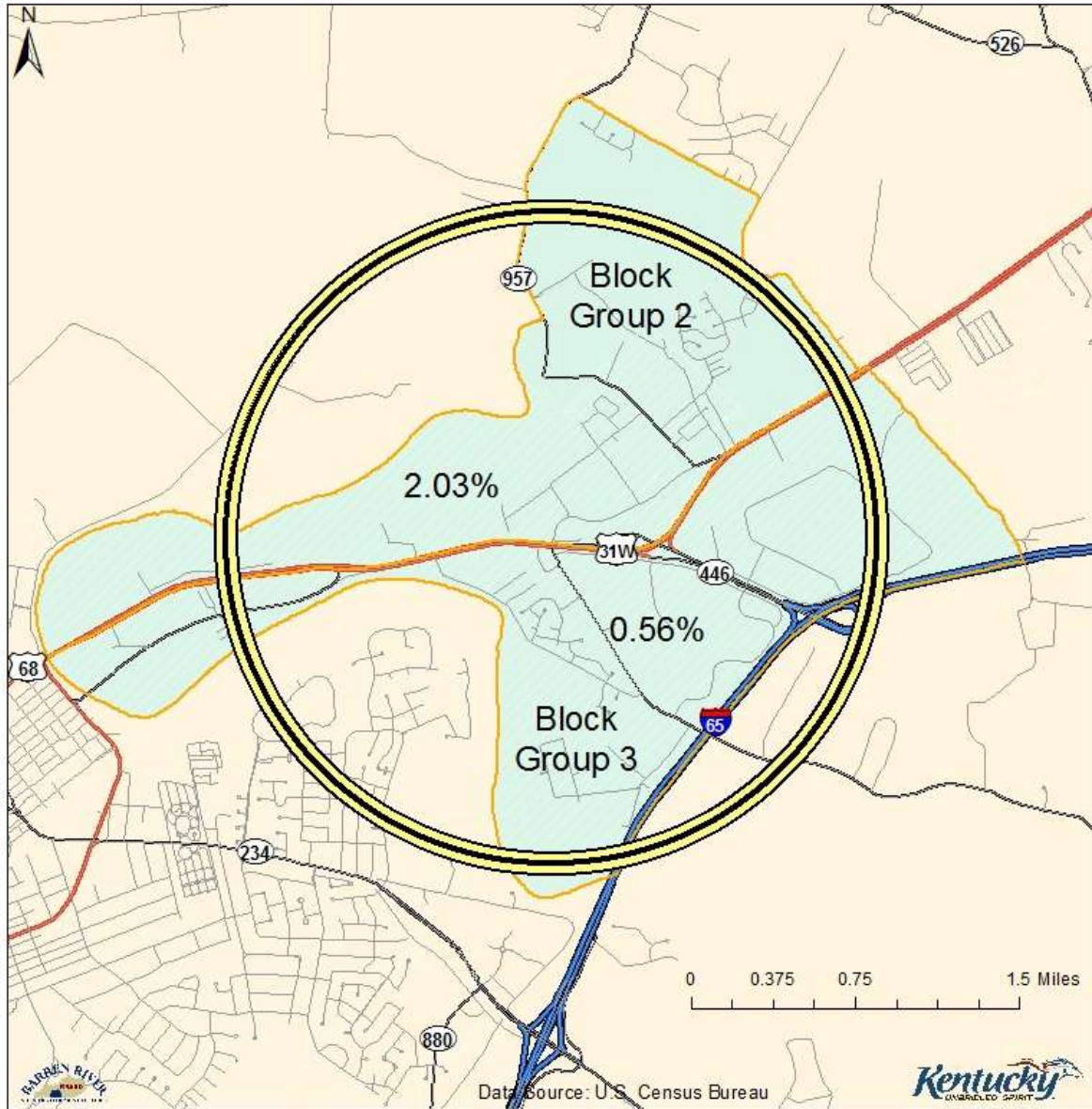


Map 4: Percentage minority persons

Limited English proficiency in the state averages 1.93%, while Warren County has a higher average with 5.55%. Block Group 2 (2.03%) and Block Group 3 (0.56%) fall below the County average. Block Group 2 reports surpasses the Kentucky average.

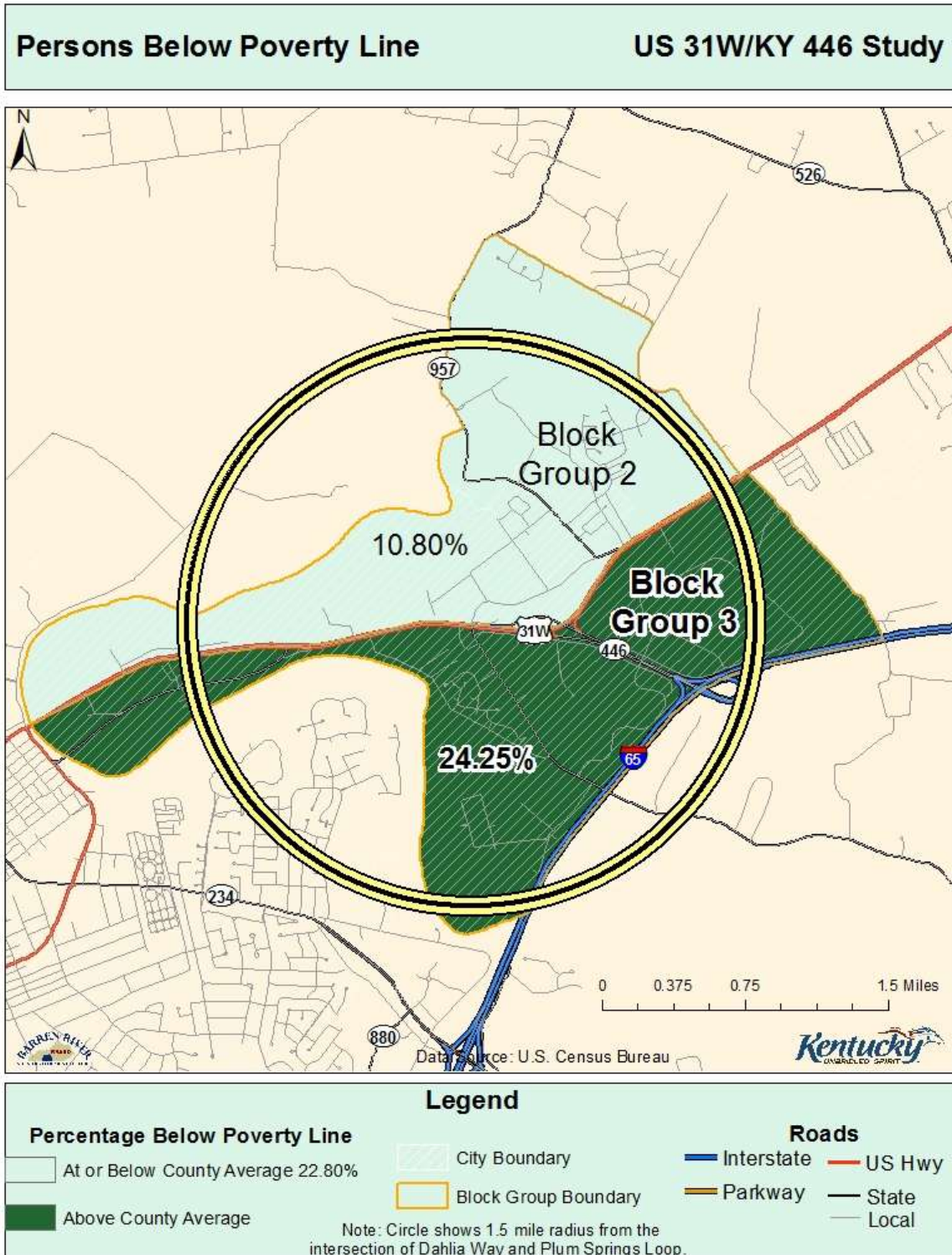
Limited English Proficiency

US 31W/KY 446 Study



Map 5: Percentage persons speaking English less than very well

Income level is also useful for socioeconomic concerns. In the study area, Block Group 2, Tract 113 has a lower percentage of persons below the poverty level than the state and county with 10.80%. Kentucky has an average of 20.11% of persons falling below poverty level. Warren County has an average of 22.80% of persons below the poverty level. Block Group 3, Tract 113 has a higher percentage of persons below the poverty level than the state and county with 24.25%.



Map 6: Percentage persons below the poverty line

An additional economic factor to be considered is median income. The state average median income is \$44,457.82. The county average median income is higher at \$45,996.05. However, Block Groups 2 and 3 Tract 113 have median incomes less than the State and county averages. Block Group 2 has a median income of \$38,512. Block Group 3 has a median income of \$37,692.

Applicable Laws, Acts and Executive Orders

Civil Rights Act of 1964, Title VI (42 USC 2000d et seq.) -This title declares it to be the policy of the United States that discrimination on the grounds of race, color, or national origin shall not occur in connection with programs and activities receiving federal financial assistance, and authorizes and directs the appropriate federal departments and agencies to take action to carry out this policy. The Presidential Memorandum accompanying Executive Order 12898 states that in accordance with this title, each federal agency should ensure that all programs or activities receiving federal financial assistance that affect human health or the environment do not directly, or through contractual or other arrangements, use criteria, methods, or practices that discriminate on the basis of race, color, or national origin.

Age Discrimination Act of 1975 - 42 U.S.C. 6101, provides: No person in the United States shall, on the basis of age, be excluded from participation in, be denied the benefits of, or be subjected to discrimination under any program or activity receiving Federal financial assistance.

Rehabilitation Act of 1973, Section 504 - 42 U.S.C. 794, et seq., provides: No qualified handicapped person shall, solely by reason of his handicap, be excluded from participation in, be denied the benefits of, be subjected to discrimination under any program or activity that receives or benefits from Federal financial assistance.

Americans With Disabilities Act of 1990 - 42 U.S.C. 12131, et seq., provides: No qualified individual with a disability shall, by reason of such disability, be excluded from the participation in, be denied the benefits of, or be subjected to discrimination by a department, agency, special purpose district, or other instrumentality of a State or local government.

Executive Order #12898 - (Environmental Justice) directs federal agencies to develop strategies to address disproportionately high and adverse human health or environmental effects of their programs on minority and low-income populations.

Executive Order #13166 - (Limited-English-Proficiency) directs federal agencies to evaluate services provided and implement a system that ensures that Limited English Proficiency persons are able to meaningfully access the services provided consistent with and without unduly burdening the fundamental mission of each federal agency.